

**Anti-NAMPT Reference Antibody (Alt-100)**  
**Recombinant Antibody**  
**Catalog # APR10580****Specification**

---

**Anti-NAMPT Reference Antibody (Alt-100) - Product Information**

Application	FC, Kinetics, Animal Model
Primary Accession	<a href="#">P43490</a>
Reactivity	Human, Mouse
Clonality	Monoclonal
Isotype	IgG1
Calculated MW	150 KDa

**Anti-NAMPT Reference Antibody (Alt-100) - Additional Information****Target/Specificity**  
NAMPT**Endotoxin**  
< 0.001EU/ µg,determined by LAL method.**Conjugation**  
Unconjugated**Expression system**  
CHO Cell**Format**  
Purified monoclonal antibody supplied in PBS, pH6.0, without preservative.This antibody is purified through a protein A column.**Anti-NAMPT Reference Antibody (Alt-100) - Protein Information****Name** NAMPT**Synonyms** PBEF, PBEF1**Function**  
Catalyzes the condensation of nicotinamide with 5- phosphoribosyl-1-pyrophosphate to yield nicotinamide mononucleotide, an intermediate in the biosynthesis of NAD. It is the rate limiting component in the mammalian NAD biosynthesis pathway. The secreted form behaves both as a cytokine with immunomodulating properties and an adipokine with anti-diabetic properties, it has no enzymatic activity, partly because of lack of activation by ATP, which has a low level in extracellular space and plasma. Plays a role in the modulation of circadian clock function. NAMPT-dependent oscillatory production of NAD regulates oscillation of clock target gene expression by releasing the core clock component: CLOCK-BMAL1 heterodimer from NAD-dependent SIRT1- mediated suppression (By similarity).

**Cellular Location**

Nucleus. Cytoplasm {ECO:0000250|UniProtKB:Q99KQ4}. Secreted Note=Under non-inflammatory conditions, visfatin predominantly exhibits a granular pattern within the nucleus. Secreted by endothelial cells upon IL-1beta stimulation. Abundantly secreted in milk, reaching 100- fold higher concentrations compared to maternal serum

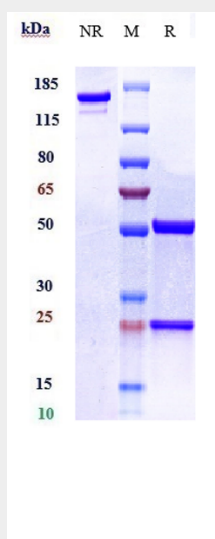
**Tissue Location**

Expressed in large amounts in bone marrow, liver tissue, and muscle. Also present in heart, placenta, lung, and kidney tissues

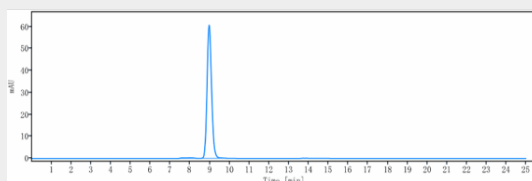
**Anti-NAMPT Reference Antibody (Alt-100) - Protocols**

Provided below are standard protocols that you may find useful for product applications.

- [Western Blot](#)
- [Blocking Peptides](#)
- [Dot Blot](#)
- [Immunohistochemistry](#)
- [Immunofluorescence](#)
- [Immunoprecipitation](#)
- [Flow Cytometry](#)
- [Cell Culture](#)

**Anti-NAMPT Reference Antibody (Alt-100) - Images**

Anti-NAMPT Reference Antibody (Alt-100) on SDS-PAGE under reducing (R) condition. The gel was stained with Coomassie Blue. The purity of the protein is greater than 90%



The purity of Anti-NAMPT Reference Antibody (Alt-100) is more than 95% ,determined by SEC-HPLC.